

*Special Edition*

THE UNIVERSITY OF MISSISSIPPI  
OLE MISS

# *Commitment to Excellence Campaign*

*Honoring Remarkable Achievements  
and a New Era of Academic Leadership*



See special insert for details.

# News



## on Together their Alma Mater



on and his wife, Dr. Julie Walton, (right) were  
ruggs/Nutt Liberal Arts Enrichment Endow-  
conference when the Gerald W. Walton  
as announced with funding of \$250,000 from  
Also on hand were Mr. and Mrs. David Nutt  
ert Khayat.

owment, will be carried out to enhance  
the College of Liberal Arts. However,  
ns each year there will be more to be allo-

ate an endowment for new faculty positions  
l over five years to the Gerald W. Walton  
followed by annual supplements to Southern  
es  
ully to support the Freshman Seminar, a  
designed to enhance freshman communica-

y to the Academic Advising Center  
Law Library's David H. Nutt Collection up

*Continued on page 6*

*Public Universities*

# FoundationNews



*The University of Mississippi Foundation*

VOLUME 4 NUMBER 1  
SPRING 1999



## Friends, Ole Miss Alums Join Together to Enhance \$30 Million Gift to Their Alma Mater

**A**n already splendid gift of \$25 million to The University of Mississippi has been enhanced considerably with a friend-joining-friend arrangement all in the interest of multiplying the benefits to Ole Miss, where both donors received their undergraduate and law degrees.

The windfall began last year when Pascagoula attorney Richard Scruggs and his wife, Diane, pledged \$1 million annually for 25 years earmarked to enhance liberal arts faculty salaries. With the first installment already being utilized, Scruggs' friend and business associate David Nutt, a Jackson attorney, and his wife, Tracy, have stepped forward and together have devised a better plan, which increases the total pledge to \$30 million and shortens the term to 15 years, creating the new Mr. and Mrs. Richard Scruggs/Mr. and Mrs. David Nutt Liberal Arts Enrichment Endowment.

"Mr. and Mrs. Scruggs' generous, visionary gift last fall to supplement the salary needs of an entire school has been greatly enhanced with full participation by David and Tracy Nutt," said Chancellor Robert Khayat. "This new arrangement will provide for numerous other needs on our campus. Their extraordinary commitment reflects the generous spirit of these longtime Ole Miss supporters and reinforces our commitment to being one of America's great public universities."

From an accounting perspective, upping the amount and decreasing the term greatly expand the opportunities to utilize the gift, said Dr. Don Fruge', president and CEO of The University of Mississippi Foundation. "This generous gift keeps getting better. The Scruggs family gave the University a tremendous boost at the beginning of our fall semester with funds earmarked for faculty salaries in liberal arts, and this revised arrangement made possible by the Nutt family's participation is absolutely fantastic. It will allow the University to increase the endowment a lot quicker, and with more money up front, there will be more to spend."

The original intent of the Scruggs Endowment, now the



**Provost Gerald Walton and his wife, Dr. Julie Walton, (right) were recognized at the Scruggs/Nutt Liberal Arts Enrichment Endowment campus press conference when the Gerald W. Walton Library Collection was announced with funding of \$250,000 from the \$30 million gift. Also on hand were Mr. and Mrs. David Nutt and Chancellor Robert Khayat.**

Scruggs/Nutt Endowment, will be carried out to enhance faculty salaries in the College of Liberal Arts. However, under the new terms each year there will be more to be allocated as follows:

- \$400,000 to create an endowment for new faculty positions
- \$250,000 funded over five years to the Gerald W. Walton Library Collection, followed by annual supplements to Southern Studies and Forensics
- \$200,000 annually to support the Freshman Seminar, a visionary program designed to enhance freshman communication skills
- \$35,000 annually to the Academic Advising Center
- \$125,000 to the Law Library's David H. Nutt Collection up

*Continued on page 6*



*Committed to Being One of America's Great Public Universities*



# Chancellor Khayat Announces \$200 Million Capital Campaign at 150th Convocation

**A** day celebrating how far The University of Mississippi has come in its first 150 years gave some indication of how far the University plans to go in a new century.

Chancellor Robert Khayat announced Nov. 6 at the Sesquicentennial convocation a \$200 million capital campaign, which represents the largest capital goal ever undertaken by the University. Already \$130.9 million has been contributed to the *Commitment to Excellence Campaign*, which concludes December 2000.

"Against the backdrop of our rich history and upon the firm foundation laid by those who preceded us, we move forward to fulfill our destiny," the chancellor said during the morning convocation that celebrated Ole Miss' founding as the first public institution of higher learning in the state. The Mississippi Legislature chartered the University in 1844, and the Lyceum doors opened to the first 80 students four years later in 1848.

"Our time has come to emerge and be recognized as one of America's great public universities. We have vigorously pursued our mission of teaching, research and service, but we also have functioned as a laboratory for leaders, a pioneer in scientific and social exploration, and a catalyst in America's struggle for a free and just society," he said.

In his address, Khayat outlined the seven goals of the *Commitment to Excellence Campaign*, which will benefit the University and The University of Mississippi Medical Center: enhancing the University libraries, ensuring academic preeminence, attracting and retaining exceptional students, supporting a world-class Honors College, assuring continued excellence on the Health Sciences Campus, providing and sustaining a competitive information technology infrastructure, and cultivating the cultural environment of the University community.



## *Commitment to Excellence*

### CAMPAIGN GOALS

- Enhance the University libraries
- Ensure academic preeminence
- Attract and retain exceptional students
- Support a world-class Honors College
- Assure continuing excellence on the health sciences campus
- Provide and sustain a competitive information technology infrastructure
- Cultivate the cultural environment of the University community

### **THE UNIVERSITY OF MISSISSIPPI**

"This initiative to attract private support for our academic programs is the culmination of four years of planning, preparation, and preliminary activities," the chancellor said. "The response of our alumni, faculty, staff, students, and friends has been enthusiastic and overwhelming. This campaign will provide the margin of excellence.

"During the next two years—from today through December 31, 2000—we will ask all alumni and friends of this University to contribute to this campaign. There are 90,000 of us who are capable of assuring that we not only reach the goal of \$200 million but also exceed it."

Three alumni have stepped forward to co-chair the *Commitment to Excellence Campaign's* National Steering Committee: Dr. L. Stacy Davidson of Cleveland, George P. Hewes III of Jackson, and Celia C. Muths of Gulfport.

The National Steering Committee is composed of Gary L. Anderson, Dr. Bryan Barksdale, Janet G. Farrington, Roger P. Friou, Larry L. Johnson, Howard L. McMillan Jr., John N. Palmer, Joe J. Schmelzer III, and Dr. R.

Faser Triplett Sr., all of Jackson; Kathryn B. Black of Oxford; Louis K. Brandt of Houston, Texas; Harold B. Burson of Scarsdale, N.Y.; Dr. James V. Ferguson Jr. of Greenwood; Roger M. Flynt Jr. of Atlanta; Edward O. Fritts of Arlington, Va.; Dr. Gerald M. Hollingsworth of Niceville, Fla.; Edith Kelly-Green and Michael S. Starnes, both of Memphis; Lauch M. Magruder Jr. of Highlands, N.C.; James M. McMullan of Lake Forest, Ill.; Carole Lynn Meadows of Gulfport; Dr. Paul H. Moore Sr. of Pascagoula; Charles L. Overby of Brentwood, Tenn.; Aubrey Patterson Jr. of Tupelo; Robert Seibels III of Montgomery, Ala.; and Gary L. Sisco of Washington, D.C. A host of other alumni are serving on other campaign committees.

*Continued on page 6*

# MESSAGES

## from the Chancellor



*As a community of alumni, faculty, staff, and students, we made a commitment to assure the future of our university. Our goal is to be—and to be recognized as—one of America's great public universities. Attainment of that noble objective is in our hands—thousands of hands—joined in a partnership that involves each of us.*

*Those of us who are privileged to work at the University are committed to being good stewards. We realize that we are the temporary trustees of this University—building on the investments of our predecessors and striving to be sure that our successors inherit a stronger, more beautiful university.*

*The Commitment to Excellence Campaign is an essential element in our effort to strengthen our school. With a \$200 million goal, which should not only be met but exceeded, this can truly be our time. During 1999-2000, the level of our commitment will determine the future of Ole Miss.*

*The generosity of Ole Miss people has created a sense of optimism previously unknown at the University. Scholarships, library resources, salary enhancements, science laboratories, athletics facilities, campus beautification, student services, and other exciting developments reflect the impact of your investments in the University.*

*We ask you to recruit students, attend campus events, participate in alumni activities, and make financial contributions to your favorite programs. By responding positively and generously, you will know that you made a major difference in the quality of the University, the lives of generations of students, and the future of our society.*

*People who love Ole Miss join me in thanking you for participation in this worthy endeavor.*

*Robert Khayat*

*"...thousands of hands—  
joined in a partnership  
that involves each of us."*

## from the Campaign Co-Chairs

*As co-chairs of the Commitment to Excellence Campaign, we want to thank the 17,722 members of the Ole Miss family who have made gifts and/or pledges totaling more than \$130.9 million during the early stages of the campaign. We are excited to report this level of financial success so early in the Campaign! We*

*are even more excited about the increasing number of alumni and friends who have decided to make the University one of their charitable priorities for the next two years.*

*The National Steering Committee has accepted the challenge to raise at least \$200 million for the University by the close of the Campaign on*



**George P. Hewes III**

*December 31, 2000. Chancellor Khayat has also challenged us to ask every former student and friend of Ole Miss to make a gift during this campaign. We believe that we can surpass the Campaign goal because of the dedicated effort by members of our campaign committees and the wonderful response of the University's alumni and friends. Please join in this partnership to provide the margin of excellence for Ole Miss for the 21st century. Every gift at every level makes a difference for Ole Miss.*

*"Every gift at every level  
makes a difference  
for Ole Miss."*

*of academics and become a part of the quest to ensure that our beloved Ole Miss will be recognized as one of America's great public universities.*

*Thanks,*

*L. Stacy Davidson, Jr.*

*George P. Hewes III*

*Celia Carter Muths*



**L. Stacy Davidson, Jr.**



**Celia C. Muths**

*We will be happy to talk with you if you have specific questions about the Campaign. Please consider a generous gift in support*



# *Adler Endowment Funds New Computer Science Lab at Ole Miss*

**A** new state-of-the-art computer classroom has opened in The University of Mississippi Department of Computer and Information Science funded by the proceeds from one of three \$1 million gifts to Ole Miss from John Gabor Adler.

Adler—a Hungarian refugee who fled penniless from Hungary in 1956, attended Ole Miss on a full scholarship in engineering and became a successful businessman—established a scholarship endowment in 1993 with a gift of stock. He upped the fund two years later by another million-plus dollars, and today some 140 Ole Miss engineering students are benefitting from thousands of dollars in scholarships and fellowships provided by the Adler Scholarship Endowment.

Adler's third gift of stock to Ole Miss in 1996 amounting to about \$1 million was earmarked to help ensure that the computer science program of the School of Engineering stays on the cutting edge of technology. Proceeds from that endowment have made possible the new modern laboratory of 24 stations, which feature modern desks and state-of-the-art computers, hardware, and networking.

In a show of appreciation demonstrating a desire to do their part, faculty, staff and students in the computer science department became personally involved in the project, said Dr. Robert P.



Cook, chair. Members worked together for months helping with every phase from selection of equipment and designing the renovation to uncrating and installing desks, chairs, and computers.

Although technology moves ahead very fast, "we bought something we know will last as long as possible," said Cook, adding that the Adler Endowment promises to be a tremendous perpetual resource for the department.

"With funds available on a quarterly basis, we can plan ahead to integrate the latest technology into our computer science degree program," he concluded. Adler graduated from Ole Miss in 1960 with a bachelor's degree in electrical engineering. After college, he was hired by IBM. Realizing he had executive potential, IBM sent Adler to Stanford University as a Sloan Executive Fellow, and he graduated in 1971.

In 1985, Adler was recruited by Larry Boucher, a former IBM colleague who had started his own company Adaptec, Inc. Adler recently retired from the company after a highly successful career.

Founded in 1981 in Milpitas, Calif., Adaptec makes products that improve the input/output capabilities of personal computer systems and offers a wide array of input/output solutions for microcomputers. ■



## *Welcome, Coach Cutcliffe!*

Coach David Cutcliffe addresses the crowd at a recent campus press conference following his introduction as Ole Miss' head football coach. Formerly the offensive coordinator at the University of Tennessee, Cutcliffe joined Ole Miss in December and led the Rebels to a win in the Independence Bowl.



# Nobel Laureate Speaks

## During Sesquicentennial Celebration

**D**r. Gary Becker, the 1992 Nobel Laureate in Economic Sciences, delivered the inaugural Hearin Foundation Lecture Oct. 30 as part of The University of Mississippi's Sesquicentennial activities.

Sponsored by the Ole Miss School of Business Administration, the lecture "Education, Human Capital and Economic Growth" was held in Fulton Chapel on the Oxford campus. The Hearin Lecture Series in the business school is made possible through a \$5 million grant from the Robert M. Hearin Support Foundation.

Becker is a professor of economics and sociology at the University of Chicago (UC). He was awarded the Nobel Prize for realizing the relevance of economics outside the typical domain.

A senior fellow at Stanford University's Hoover Institution (a research center devoted to advanced study in domestic public policy and international affairs), Becker was named one of the 50 Great Americans by *Marquis Who's Who* in 1995 and was honored with UC's Alumni Association Professional Achievement Award only 13 years after completing his doctoral work. He also has been a monthly columnist for *Business Week* since 1985.

Becker holds 11 honorary doctoral degrees from American universities and also from universities in Jerusalem, Buenos Aires, Prague, and Warsaw. He earned a bachelor's degree from Princeton University and master's and doctoral degrees from UC.

"There is a deep sense of pride in having one of the most preeminent economists in the world visiting The University of Mississippi," said Dr. Keith Womer, Ole Miss associate dean for faculty and research and a professor of economics and finance in the business school.

"Becker's work is particularly appropriate for the business school because it covers a wide range of topics uniquely interesting for not just economists but the world in general," he added.

Becker was born in Pottsville, Penn., to parents who both left school after the eighth grade—his father because of a desire to make money and his mother because girls weren't expected to get much education. After his father lost most of his sight, Becker was responsible for reading the stock quotations and other reports on financial developments aloud.

"Perhaps that stimulated my interest in economics, although I was rather bored by it," the accomplished economist explained on his web site. A freshman economics course at Princeton turned Becker on to the rigors of a subject that dealt with social organization, he added.

After holding a faculty position at Columbia University and a research appointment with the National Bureau of Economic Research, Becker returned to UC, where he began to specialize his research of economics to its effects on family issues: birth rate, family size, marriage, divorce, altruism toward other members, investments by parents in children, and long-term changes in what families do.

A former president of the American Economic Association, Becker also served as economic adviser to Bob Dole in

the 1996 presidential campaign. He is the author of numerous books and articles. Along with his wife, Guity Nashat Becker, he most recently wrote *The Economics of Life* (McGraw-Hill, 1996). Other recent books are *Gary Becker in Prague* (Prague, 1996), *Accounting for Tastes* (Harvard University Press, 1996), and *Essence of Becker* (Hoover Institution Press, 1996). ■



**Dr. Gary Becker (center), a 1992 Nobel Laureate and a professor of economics and sociology at the University of Chicago, delivered the inaugural Hearin Foundation Lecture in the Ole Miss School of Business Administration. Welcoming Becker to campus were Dr. Randy Boxx (left), dean of business administration, and Dr. Keith Womer, associate dean.**

THE UNIVERSITY  
OF MISSISSIPPI



SCHOOL OF  
BUSINESS  
ADMINISTRATION



## *Ole Miss Honors State Bar President Guthrie Abbott*

Dr. Guthrie T. Abbott of Oxford, president of the Mississippi Bar Association, was honored at a reception at The University of Mississippi hosted by Chancellor Robert Khayat, Provost Gerald Walton and Dean of Law Samuel M. Davis.

The Butler, Snow, O'Mara, Stevens & Cannada Lecturer in Law at Ole Miss, Abbott was installed as Bar president in July to lead the 6,552-member association.

Abbott received both his law and undergraduate degrees at Ole Miss. He was a fellow in Law and Humanities at Harvard University and a visiting scholar at Cambridge University.

A member of the law school faculty since 1970, Abbott has been chosen the Outstanding Law Professor four times and has received the University-wide Outstanding Teacher Award.



## *Friends Enhance \$30 Million Gift continued...*

to the amount of \$375,000, after which subsequent payments will go to the Center for Performing Arts  
— \$20,000 annually to help maintain Rowan Oak  
— the balance of more than \$100,000 to provide scholarships for Mississippi students based on merit and need.

Upon making the \$25 million commitment last year, Scruggs said, "My wife and I want to ensure that Ole Miss is able to attract and keep the best teachers available; universities operate in a very competitive world. We feel great about Ole Miss as it enters the 21st century because it is stronger in every regard than it has ever been."

Nutt concurred, saying, "I am very excited about the opportunity to support the University and have a positive impact on the future of its programs and personnel."

Mr. and Mrs. Scruggs have been longtime supporters of both academic and athletic programs at Ole Miss. Their gifts include a scholarship endowment they established for children of employees of Ingalls Shipbuilding Division of Litton Industries. Mr. Scruggs, who serves on The University of Mississippi Foundation's Board of Directors, received a bachelor's degree from Ole Miss in 1969 and a law degree in 1977.

Nutt received a bachelor's degree at Ole Miss followed by a law degree in 1971. His support to the University includes a \$100,000 commitment in 1996 to found the Dean Parham Williams Scholarship in Law Endowment in honor of his former law professor and mentor. ■

## *Chancellor Khayat Announces Campaign continued...*

The announcement of a new campaign to attract \$200 million in private funds comes at a time when Ole Miss is enjoying an exhilarating momentum, the chancellor said. Multimillion-dollar construction projects are literally transforming the Oxford and Medical Center campuses, and the

*"There are 90,000 of us who are capable  
of assuring that we not only reach the goal of  
\$200 million but also exceed it."*

Chancellor Robert Khayat

quest for a prestigious chapter of the Phi Beta Kappa honor society is in clearer view.

The University's endowment has seen phenomenal growth—from \$8 million in 1984 to \$204.3 million in 1998. That increase, in fact, recently placed Ole Miss on *The Chronicle of Higher Education's* Almanac list of the nation's top 30 public institutions with the largest endowment per student. Last year almost 18,000 alumni and friends chose to support Ole Miss. The *Commitment to Excellence Campaign* is based on an alumni- and friends-driven model used most often in private institutions' fund-raising programs. ■

## Jackson Firm Honors Retiring Member with School of Law Scholarship

**T**he Jackson law firm Shell, Buford, Bufkin, Callicutt and Perry has established a scholarship endowment at The University of Mississippi School of Law honoring K. Hayes Callicutt on the occasion of his retirement.

Callicutt was a founding member of the firm following his graduation from the Ole Miss law school in 1952. A trial attorney, he worked primarily in the area of insurance defense.

A native of New Albany, Callicutt now makes his home in Oxford.

The firm chose to honor Callicutt with the scholarship bearing his name in recognition of his years of service. "The scholarship endowment is a gesture of appreciation by the law firm in honor of Mr. Callicutt's retirement," said firm member Ken Adcock. "Ole Miss is probably one of his deepest loves, and we thought this would be something he would appreciate. He came from a humble background, and this fund is meant to provide financial assistance to deserving law students with similar backgrounds."

Expressing appreciation to the firm, Dean Samuel M. Davis said, "There is no greater need at the Law School than the need we have for scholarships for entering students. We are deeply appreciative to the firm for creating this scholarship, and we share in their respect for Hayes Callicutt and in their desire to recognize him in this very special way."

According to the agreement, the Callicutt Scholarship Endowment, established with an initial \$5,000 pledge, will provide scholarships to assist deserving men and women who are pursuing a legal education at the University. A recipient must be an entering, full-time law student who received an undergraduate degree at Ole Miss with a cumulative grade-point average of at least 3.0. In order to maintain the scholarship, recipients must remain in the top one-third of their class.

Fully tax-deductible gifts to the fund can be made through The University of Mississippi Foundation, P.O. Box 249, University, MS 38677; phone 800-340-9542; e-mail umf@olemiss.edu. ■



**Dr. Sam Davis (left), dean of the School of Law, expresses his appreciation to K. Hayes Callicutt of Oxford for the scholarship endowment established in his honor.**

## Jackson Native Receives Top MBA Award in School of Business Administration

**M**iles Payne of Jackson, a University of Mississippi student pursuing a master's of business administration (MBA) degree, recently was awarded a \$2,000 Chevron MBA Scholarship.

The honor is reserved for the top MBA recruit at Ole Miss each year and is the highest award available to MBA students. The scholarship carries no work requirement and also provides a full waiver of tuition for the academic year.

"It's always nice to be honored, but an honor that's backed with such a gift carries more weight," said Payne, a 1996 Millsaps College graduate with a bachelor's degree in chemistry.

"Miles Payne is an excellent student within the Ole Miss MBA program," said Dr. John Holleman, director of the MBA administration at Ole Miss. "The Chevron Scholarship is instrumental in recruiting exceptional students into our program. The School of Business Administration is truly grateful to Chevron for the continuing support."

Payne, who intends to pursue a career in medicine after he completes the MBA program, said he feels that an MBA will be useful in the new world of HMOs and corporate hospitals. He also said that Ole Miss has offered the perfect environment to facilitate reaching this goal.

"So many graduate programs say they have re-engineered, have modernized, and I don't take much stock in the propaganda, but the MBA program here has truly turned around. Not one of my classmates would say they haven't been challenged," the graduate student said.

"I chose Ole Miss because it is in Oxford. I love Ole Miss, but it wouldn't be Ole Miss if it wasn't in Oxford. The city and school just can't be considered individually." ■



**Miles Payne of Jackson (center), a graduate student in The University of Mississippi's business administration program, is presented the Chevron MBA Scholarship by Dr. John Holleman (left), Ole Miss' director of MBA administration, and Chancellor Robert Khayat (right). The \$2,000 scholarship is reserved for the top MBA recruit each year.**



# In Support of Khayat's Goals, Janice and Allen Lackey Join Chancellor's Trust

**W**hen it came time in 1959 for Allen Lackey of Houston, Texas, to choose a college, the only school he considered was The University of Mississippi.

"I wanted to go to Ole Miss from the time I entered first grade," he said. "My father attended law school at Ole Miss, so I've been a fan and supporter since I was a small boy."

After following his father's footsteps and graduating from the School of Law in 1968, Lackey was hired as a lawyer by Shell Oil Co., where he has led a distinguished career for the past 31 years. He serves as a vice president and the general counsel.

Although Houston is home for Lackey and his family, he keeps in touch with his Mississippi roots by visiting the Ole Miss campus once a year during a football weekend and by visiting relatives in his hometown of Jackson, Miss.

"I have so many fond memories of Ole Miss they're almost too numerous to tell," Lackey said. "I remember the glory years of Ole Miss football with Coach Johnny Vaught and the championships we won during my undergraduate years. I remember two Ole Miss students who became Miss Americas, but, most of all, I remember making lots and lots of friends."

Lackey said he wanted to repay Ole Miss for the many wonderful things it gave him. He and his wife, Janice, recently joined the Chancellor's Trust with a \$20,000 gift.

"I really believe Chancellor Robert Khayat is doing a terrific job in leading the University into the 21st century," Lackey said. "My decision to join the Chancellor's Trust was in a large part because of my desire to invest in Ole Miss' future and to help Chancellor Khayat achieve his goal of making Ole Miss one of the nation's leading educational institutions."

Chancellor Khayat responded, saying, "Our commitment to academic excellence depends greatly upon people who love and believe in The University of Mississippi, and Allen and Janice Lackey are two of those special people. We are truly grateful to this couple for helping us to achieve the margin of excellence to which we aspire."



**Steve Owens, executive director of advancement, presents Allen Lackey of Houston, Texas, with a certificate of appreciation for joining the Chancellor's Trust Program.**

"The Chancellor's Trust provides unrestricted resources for areas of greatest need on the Oxford campus," Khayat continued. "We have been able to use these funds to help students and to assist professors with innovative teaching methods and cutting-edge research. The Chancellor's Trust funds have a tremendous impact on this University."

Lackey believes Ole Miss will achieve great things in the future. "Ole Miss is poised to enter a new era of excellence and distinction. I think up until now the past may have been as much of a focal point as the future, but that is definitely changing as we enter the 21st century."

Active in the American Bar Association and a number of other legal organizations, Lackey is working toward improving diversity within the legal profession. He provides leadership as chairman of the American Petroleum Institute's General Committee on Law and is a fellow and former director of the Houston Bar Foundation. Among other things, he is an advisory board member of the International and Comparative Law Center of the Southwestern Legal Foundation and a member of the Executive Committee of Texans for Judicial Election Reform.

Lackey also serves as board chair of the charitable organization El Centro de Corazon (Center of the Heart), which focuses on helping needy members of Houston's Hispanic community.



---

*"We have been able to use these funds to help students and to assist professors with innovative teaching methods...."*

Chancellor Robert Khayat

---

Over the years, Lackey has been a loyal supporter of the Lamar Order in the School of Law, the Law Professors Incentive Award, the Robert Khayat Scholarship Endowment and the Law Alumni/Dean's Fund.

Lackey and his wife, Janice, have three daughters. Elizabeth and Kathleen are students at the University of Texas at Austin, and Shannon graduated from the university in 1998. ■

# Ed Meek, Ole Miss Institution, Retires After Serving Alma Mater for 37 Years

*Saluting the man who helped shape and energize The University of Mississippi's public image nationwide and globally*

**D**r. Ed Meek, assistant vice chancellor for public relations (PR) and marketing at Ole Miss, retired in January to pursue private business interests. Appointed as the University's director of public information in 1964, Meek, then 24, was the youngest department head in Ole Miss history.

"Dr. Meek is something of an Ole Miss institution, and his influence will continue to be felt in the coming decades," said Chancellor Robert Khayat. "He has been a mentor to hundreds of students, an innovator in the cause of change and growth, and a tireless and dedicated leader through some very difficult times in this University's history."

A self-described "country boy" from Charleston, Miss., Meek toiled as a freelance writer and photographer for regional newspapers to pay his way through the Ole Miss journalism program. His work had already appeared in *Time*, *Life*, *Pageant* and other national publications by the time he'd earned a bachelor's degree in 1961. He took a full-time job as an Ole Miss PR staff writer the next year.

After James Meredith's enrollment led to racial tensions and violence that made international headlines, then-Chancellor J.D. Williams tapped Meek for the unenviable task of rebuilding the University's image. "For at least the first 20 years, much of my time was spent dealing with issues related to race and social changes brought on by the Civil Rights Movement," Meek said. "A lesser university wouldn't have survived the kind of scrutiny we were subjected to. But one of the strengths of Ole Miss is its resiliency and ability to overcome adversity and keep moving. We came out of that period as a family, and we were stronger for it."

In Meek's tenure, PR quickly became more than a function of spin control. A progressive thinker with an entrepreneurial bent, he took a business-like approach to his job, using market research tools to learn what students needed and wanted and prompting administrative changes that would meet those needs. His approach served as a model to other state universities around the United States.

"People think of me as the University's mouthpiece, but PR is just as much about listening to the public," Meek said. "By stay-

ing in touch with our public, we've been able to reshape the University's image and, more importantly, the reality behind that image and then refocus

our message to more effectively reach the right markets."

As a former journalist and associate professor of journalism, Meek has been able to convey that message through his vast network of media contacts, many of them longtime friends or former students. "He runs his operation as a partnership with the newspapers," said Ruth Ingram of *The Clarion-Ledger*. "He knows we have a job to do, and it can sometimes be unpleasant for the University, but there is no air of secrecy."

Bert Case, news anchor for WLBT-TV in Jackson, called Meek "the best PR man in Mississippi." Case added, "He learned early on the importance of TV and TV news and understood it better than any PR person I've ever known. He was able to move Ole Miss into the forefront, as far as broadcast coverage was concerned, long before other people caught on to the power of television."

To many alumni, Meek is known as a mentor who helped them find or even gave them their first jobs. "I love the students," he said. "They challenged me every day and really got my motor running. It was rewarding to help so many kids get focused, find jobs, and be successful in their careers. It's one of the things I'm proudest of in my career."

As an entrepreneur, Meek founded the Tupelo Furniture Market Inc., the nation's fourth-largest market exhibition center. He is president and CEO of Oxford Publishing, which has established and published numerous national magazines.

"Ed Meek is one of the most creative people I have ever known," Khayat said. "Besides all the hard work he's done, he and his wife, Becky, have demonstrated enormous personal commitment to the University, including personal financial support. Ole Miss will miss his leadership but will continue, fortunately, to enjoy his friendship and support."

Meek said he owes a great deal to the University as well. "Everything I have and everything I am are a result of this University," he said. ■



Dr. Ed Meek, then and now



# University's Endowment Dramatically Increases, Gains National Attention

**W**hen The University of Mississippi launched its first major capital campaign in 1984, the school's endowment stood at \$8 million.

In 1998, The University of Mississippi Foundation manages an endowment of \$204.3 million for the University and The University of Mississippi Medical Center, enjoying an annual giving level that outpaces many organizations in the nation. With a new century on the horizon, however, Ole Miss Chancellor Robert Khayat unveiled the new \$200 million *Commitment to Excellence Campaign*, with \$130.9 million already collected toward that goal.

The *Chronicle of Higher Education's* 1998-99 Almanac Issue lists Ole Miss as one of the nation's top 30 public institutions with the largest endowment per student. In the 1998 report, the University claimed a spot on Philanthropy 400, *The Chronicle of Philanthropy's* annual ranking of organizations that receive the most private donations. Based on 1997 contributions, Ole Miss vaulted from the 294th spot from the previous year to No. 217.

"This has been a truly remarkable time in the life of our university, as gifts far surpassed our highest expectations. We are grateful beyond words," Khayat said. "While state support has increased due to outstanding legislative leadership, private support makes possible a margin of excellence, that is, superb aca-

demie programs and an extraordinary learning environment. Increasing our endowment is absolutely key as we strive to be recognized as one of America's great public universities."

According to a 1997 report by the National Association of College and University Business Officers, the University's total endowment is ranked 160th among all colleges and universities in the nation. The Council for Advancement and Support of Education also singled out Ole Miss in 1997 for leading the nation with a 200 percent increase in the number of donors who

contributed \$5,000 or more during the fiscal year.

"Our private support and endowment have reached the level of maturity that is nationally competitive," the chancellor said. "While we have received some large gifts, the University's overall success in this area can be credited to a growing, committed support base that provides gifts at many levels."

Dr. Don L. Frugé, president and chief executive officer of the University Foundation, predicts the new capital campaign will be successful. "We are blessed with a beloved and successful chancellor. We are blessed with loyal alumni and friends, and we are blessed with a strong economy, which allows people to be supportive of the University," he said. ■

## Top Public Institutions in Endowment Per Student\*

|   |                 |
|---|-----------------|
| 5. University of Virginia . . . . .                                       | \$59,736        |
| 10. University of North Carolina at Chapel Hill and Foundations . . . . . | \$36,369        |
| <b>20. The University of Mississippi and Foundation . . . . .</b>         | <b>\$18,173</b> |
| 22. Purdue University . . . . .   | \$17,731        |
| 25. University of Vermont . . . . .                                       | \$16,751        |
| 28. University of Florida and Foundation . . . . .                        | \$15,488        |

\*Source: *Chronicle of Higher Education* 1998-99 Almanac Issue



## Pace Memorial Scholarships Awarded at UM Law School

Recipients of the William M. Pace Memorial Scholarships at The University of Mississippi School of Law Chris Stokes (from right) of Fulton and David Houston of Aberdeen were honored at a recent campus luncheon. Hosted by Dean Samuel M. Davis (left) luncheon guests also included Mrs. William M. Pace (second from left) of Aberdeen.

# Roger and Susie Friou Commit \$250,000 to Undergraduate Scholarships in Accountancy

**W**hen Roger Friou was a high school student in Tupelo, his mother set out to determine the best possible accountancy program for his college education. When the verdict came in, Friou was on his way to The University of Mississippi.

The former president of Jitney Jungle Stores Inc. of America and his wife, Susie, just made the "best" even better, by announcing their gift of \$250,000 for undergraduate scholarships in the Ole Miss School of Accountancy.

Mr. and Mrs. Friou had already established a graduate scholarship in accountancy, named appropriately in memory of his mother—Annie Belle H. Friou, who steered him to Ole Miss—as well as contributed to the renovation of Conner Hall, home to accountancy, and the H.E. Peery Endowed Chair in Accountancy.

"At a time when Ole Miss is committed to enhancing and expanding academic awards for our students, Roger and Susie Friou have stepped forward with this wonderful gift," Chancellor Robert Khayat said. "The Roger and Susie Friou Scholarship Fund will stand as a testament to the loyal friendship the University community enjoys with this couple. Not only have Roger and Susie provided resources time and again, but they have tirelessly given of their time to make this a stronger University."

Dr. James W. Davis, dean of accountancy, said, "Scholarship support is an absolute necessity in recruiting top echelon students, and the Friou Scholarships provide the School of Accountancy, for the first time, the ability to offer these students a scholarship in addition to other financial support which they may receive. The Friou Scholarships will allow us to attract outstanding freshmen to major in accountancy."

"Prior to this new scholarship fund, Roger and Susie Friou provided a large gift toward the Conner Hall renovation, and the dean's new suite is being named in their honor. Roger has enjoyed a stellar career in accounting, and we have always valued his wise and visionary counsel regarding planning for the School of Accountancy's future," said Davis.

Ole Miss became one of the nation's first institutions of

higher learning with a separate accountancy school in 1979, when accountancy was separated from business administration. Today, Ole Miss accountancy graduates enjoy a 100 percent placement rate in the job market.

Friou, who is serving on the Steering Committee for the new *Commitment to Excellence Campaign*, said that through his active involvement with the School of Accountancy he recognized the need for undergraduate scholarships. "I decided it was time to do something. Enrollment has grown in the accountancy school, and Dr. Davis is doing a spectacular job as accountancy dean," said Friou, who serves on the Professional Advisory Council for the accountancy school. "Susie and I hope our gift will encourage other alumni and friends to establish scholarship programs."

The decision to establish the scholarship fund also



**Susie and Roger Friou visit with Chancellor Robert Khayat (far right) during a recent trip to the Oxford campus. Mr. and Mrs. Friou have announced a gift of \$250,000 for undergraduate scholarships in the School of Accountancy. The couple had already established a scholarship fund for graduate students in accountancy and contributed to the renovation of Conner Hall and to the H.E. Peery Endowed Chair in Accountancy.**



grew out of the couple's approval of the direction in which the University is moving, Friou said. "I have never felt this good about Ole Miss—ever," he said. "I think our friend Robert Khayat is doing an incredible job as chancellor, and Ole Miss is experiencing unprecedented progress and growth."

As a member of The University of Mississippi Foundation Board of Directors, Friou has watched with pride as the endowment experienced phenomenal growth. "There was a time when we had almost nothing compared to other universities, and now our endowment puts us up there with the big institutions," Friou said. "I attribute this growth to the willingness of Chancellor Khayat to work hard and his ability to bring everyone together for one goal: to strengthen Ole Miss."

Friou worked on the University's first development program, the Campaign for Ole Miss/Drive for Athletics, which amassed \$41.7 million for academics and \$11.6 million for athletics. "I've

*Continued next page*



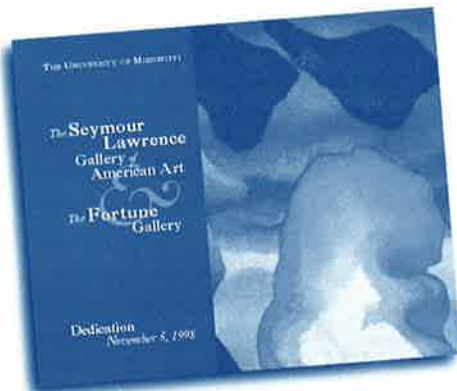
# Seymour Lawrence, Fortune Galleries Dedicated

**A** year after construction and renovation began at The University of Mississippi Museums, the Fortune and Seymour Lawrence galleries were dedicated Nov. 5.

The galleries are the result of a massive renovation and an addition to the University Museums. The \$750,000 project, which provides new storage space for the University Museums' extensive collections, was made possible through funds from the state, Elizabeth Fortune of Oxford, the estate of Seymour Lawrence, and the University.

"We're looking forward to our two new galleries, new exhibits, and new programs," said Bonnie Krause, director of the University Museums. "We are thankful to all those who contributed; their generosity and vision in providing this wonderful new addition are greatly appreciated."

Fortune, a longtime member of the Friends of the Museums and president of its board of directors, contributed to the project in honor of her late husband, Dr. Porter Fortune, chancellor emeritus. The Fortune Gallery opened with the exhibit Southern Photography, featuring such renowned artists as William Christenberry and William Eggleston.



**The Georgia O'Keeffe painting featured on the cover of the dedication program is one of 35 paintings in the Lawrence Gallery.**

The late Lawrence, a renowned publisher, chose to house his papers in the University's J.D. Williams Library (Department of Archives and Special Collections) and his collection of American art in the University Museums because of his love for Oxford and Ole Miss. Lawrence died in 1994.

The Seymour Lawrence Gallery will hold 35 paintings from Lawrence's



**The family of former University of Mississippi Chancellor Porter L. Fortune, Jr. recently gathered for the dedication of the University Museum's Fortune Gallery and Porter L. Fortune Jr. Cultural Center. After Fortune's 1989 death, his wife, Elizabeth (center, wearing corsage), continued the couple's involvement and generosity with the University Museums and the cultural center concept.**

personal collection, including works in all mediums oil paintings, ink and watercolor on paper, and tempera and acrylic paintings on a variety of canvases. "It is rare to have such a wide variety of artists working in so many different mediums in one collection," said Collections Manager William Griffith.

The Museums' new storage area is twice as large as the previous space. Krause predicts further expansions won't be needed for at least two decades.

"The primary responsibility of a museum is to preserve collections for future generations," Krause said. "The University Museums now have a larger and much improved collections storage area."

Another addition to the Museums is a brick breezeway, which will connect future additions or can be enclosed with glass to form another exhibit area.

For more Museums information, call (601) 232-7073. ■

## *Roger and Susie Friou continued...*

appreciated being asked to participate. One important lesson I learned as a student at Ole Miss is to stand by your friends at all times."

Friou began his professional career with Ernst & Ernst (now Ernst & Young) as a CPA. He joined Jitney Jungle Stores of America, Inc., as controller and was promoted up the ranks until he became president. He retired in 1997. Friou serves on the boards of Jitney Jungle, St. Dominic Health Services, Parkway Properties Inc., and The Luckyday Foundation.

Mr. and Mrs. Friou are the parents of two adult sons: Tom, who earned his accountancy degree at Ole Miss, is a CPA in New Orleans. Stuart received his accountancy degree from the University of North Carolina at Chapel Hill and is a stock market analyst in Charlotte, N.C. Both are married and have daughters.

Individuals or organizations can contribute to the Roger and Susie Friou Scholarship Fund by contacting The University of Mississippi Foundation at P.O. Box 249, University, MS 38677; phone 800-340-9542; e-mail [umf@olemiss.edu](mailto:umf@olemiss.edu). ■

# Federal Express Executive, Ole Miss Alum Establishes Scholarship in Accountancy

**A** little girl with big dreams and a grandmother who loved her frequented The University of Mississippi in unusual circumstances a few decades ago.

It was during the turbulent 1960s and earlier that young Edith Kelly-Green shadowed her grandmother at work on the Oxford campus. "My grandmother supported us by cleaning house for the students at Ole Miss," said Kelly-Green, who graduated from the University in 1973 and is a vice president at Federal Express.

Kelly-Green enrolled at Ole Miss when there were about 300 black students (compared with more than 1,200 today) on the Oxford campus, a situation she believes helped prepare her for the real world. "It became apparent to me early on that I didn't want to give anybody an easy excuse for not hiring me, for not letting me do something I wanted to do," she said.

Thanks to her grandmother's encouragement, Kelly-Green

motivated women to enter the School of Accountancy."

"We are honored that our extraordinary graduate Edith Kelly-Green has chosen to endow a scholarship at Ole Miss to help deserving students pursue academic goals," said Chancellor Robert Khayat. "Her achievements as a student, business and community leader are remarkable. She is a loyal active alumna, and we are grateful for the support she is providing the University."

The University of Mississippi graduate landed her first job as a public accountant with Touche Ross, at the time one of the Big Eight accounting firms. "I was the first black professional employee there and one of the first women," said Kelly-Green, whose climb to success has been marked with determination.

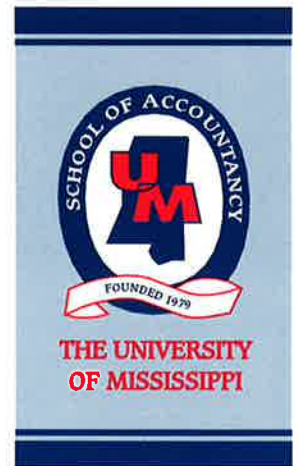
Seeking another challenge, the young professional joined Federal Express in 1977. When she noticed that the people around her who were being promoted had master's degrees and more, Kelly-Green completed an executive MBA program at Vanderbilt. And when she failed to get a promotion because she lacked the experience of managing large numbers of people, she accepted a lateral move. Before long she was promoted at Federal Express to become the highest-ranking and only black female vice president in the company at that time.

Kelly-Green sees her success as an opportunity to help others. "To some extent, I feel a responsibility to provide direction and do a lot of counseling and mentoring," she explained. "I tell people to prepare. Get those pieces of paper—diplomas, CPA certificates etc.—position yourself and don't wait for things to simply happen; take control of your future."

The Federal Express executive has served on the Ole Miss School of Accountancy Professional Advisory Council. Alumni play a big role in promoting the school, says Accountancy Dean James Davis, who

seizes every opportunity to maximize opportunities for all students.

"The School of Accountancy is grateful to Edith for establishing this scholarship honoring the memory of her grandmother, who was profoundly instrumental in her career. It seems fitting that we can now provide financial assistance to a needy and worthy student while honoring the name of Mrs. Christine Hickonbottom. Edith Kelly-Green's stellar career epitomizes the goals of the Ole Miss School of Accountancy for its students." ■



**Edith Kelly-Green**

earned her accountancy degree in three years. In honor of her loved one, the Oxford native has pledged \$50,000 to establish the Christine Hickonbottom Endowment at Ole Miss to provide scholarships for deserving female minority accountancy majors.

"With only a sixth-grade education, my grandmother wanted much more for me," said Kelly-Green. "She was a blessing and made sure that I went to college. I want to encourage other



# Medical Center News

## AHEC Network Grant to Improve Health Care Access

**T**he University of Mississippi Medical Center has received a three-year, \$2,237,485 federal grant to establish the Mississippi Area Health Education Center (AHEC) Network. Designed to provide improved access to health care in the state's rural and underserved communities, the network is a collaboration of the Medical Center, three regional AHECs and community partners throughout the state. Dr. Lessa Phillips, chair of family medicine, wrote the grant proposal with Dr. Susan Hester, associate professor of family medicine, and Dr. Aaron Shirley, associate professor of pediatrics.

"Our goal is to have strategically located health education centers in each part of the state," Phillips said. "The Medical Center values rural communities and the people in them as excellent resources of talent, skills, knowledge, and attitude about rural life."

Dr. Edgar Smith, director of the AHEC Network, said the system is designed to benefit rural communities as well as the Medical Center.

"I think people see the mutual benefit, both to the University and to the community," Smith said. "The University is actually helping the community to help itself, which is something I always like to see."

Area health education centers were created in 1972 to increase the number of health professionals who would serve the needs of rural communities in every state. Most southern states have functioning AHEC programs, and there are 45 AHEC programs spread across the nation.

To illustrate the health care needs consider that the Delta region has only 0.81 physicians per thousand in population, while the national average is 2.05 per thousand. The Delta leads the nation in infant mortality rates, lung cancer cases, hypertension rates, and deaths by accident or injury.

"If you want to do something about addressing the need for health care providers in rural areas, medical students must have the experience of knowing what the needs of a rural community are," Smith said. "The University's responsibility extends throughout the state, and AHEC really gives the Medical Center an added opportunity to fulfill its role as a provider of health care professionals for Mississippi."

Programs in Greenville, Natchez, and Philadelphia will serve as a foundation for the Mississippi AHEC network. ■



Dr. Edgar Smith

## UM Medical Center's Commitment to Excellence Campus Campaign Exceeds \$100,000 Goal

**T**he University of Mississippi Medical Center's campus drive in the *Commitment to Excellence Campaign* greatly exceeded the \$100,000 goal set and raised \$223,259 from faculty and staff. The total raised will help fund a variety of programs specified by the givers including endowed chairs, student scholarships, research programs, enrichment of the library, and hospital endowments.

"I am so pleased with our employees," said Dr. Wallace Conerly, Medical Center vice chancellor for health affairs. "Their financial contributions say that they believe in the institution and its mission. I was overwhelmed at the number of gifts that exceeded \$100 from every rank of the work force. It was tremendously gratifying to me personally to see the true level of their support."

Mike Lightsey, associate vice chancellor for financial affairs, served as campus campaign chair. Co-chairs were Sally Self, associate director of social work, and Elwin Williams, assistant director of human resources.

*"Their financial contributions say that they believe in the institution and its mission."*

Dr. Wallace Conerly



Dr. Wallace Conerly

Nine employees made contributions of \$2,500 or more to the School of Nursing and the School of Health Related Professions and

became members of the Guardian Society as a result. Thirteen other employees became new Guardians by giving or pledging \$5,000 or more to the School of Medicine and Dentistry.

The School of Dentistry committee, chaired by Dr. Joe Young of Jackson and The School of Medicine's campaign committee, chaired by Dr. Don Mitchell, also of Jackson, recently met at The University of Mississippi Medical Center. The committees for the Schools of Nursing and Health Related Professions plan to meet next month. ■

# Commitment to Excellence

*Honoring Remarkable Achievements  
and a New Era of Academic Leadership*



## Joins 1848 Society Gift to Loyalty Foundation



of Olive Branch (right) became  
Society by giving a \$1.2 mil-  
lender Trust to the Loyalty Foun-  
dation. Woody Cowart (center)  
were on hand to express  
ft.

something that would go right along with her father's personal-  
ity. "He loved the challenge of building and creating. I don't  
think he really knew the influence he had on the golfing indus-  
try in the Mid-South. Golf scholarships at Ole Miss are a perfect  
way of perpetuating his memory," she said.

"Anytime you endow scholarships, it is great for the Athletics  
Department and the University as a whole," said Ole Miss men's  
golf head coach Woody Cowart. "We are so grateful to the Her-  
rington family for this support. We are enjoying better facilities

and recruiting better players, and the  
building process comes a step at a  
time. This gift, however, provides a  
major boost to our program as well  
as great encouragement."

Ole Miss women's golf head  
coach Keil Purdom agreed, saying,  
"Our future is bright thanks to this  
extraordinary gift from the Herring-  
ton family. Their generous resources  
will ensure the future of our program,  
including the recruitment of student  
athletes. We're very fortunate to have  
such loyal supporters."

The former mayor of Olive  
Branch, Herrington was among cit-  
izens who helped establish the Olive  
Branch Country Club. He also was  
part of a group that helped develop  
an industrial park, which became  
home to Holiday Inn's corporate  
training facility and the Holiday  
Golf Club—one of the first daily  
fee golf courses in the Memphis  
area.

Herrington next developed Plan-  
tation Golf Club, carefully planning  
every hole on the course. It is one of  
only two in the area with zoysia grass  
fairways and surrounded by a pre-  
mier planned neighborhood. Son  
Mike Herrington of Olive Branch,

an Ole Miss alumnus, manages Plantation Golf Club.

"I think he would be really honored if he knew about the  
scholarships," Allen said of her father. "He loved Ole Miss so  
much; he just loved everything about it."

Mr. and Mrs. Herrington have been longtime supporters of  
the University, providing resources to the recent expansion of  
Vaught-Hemingway Stadium, scholarships, Pride of the South  
marching band, Athletic Training Center, Loyalty Foundation,  
and Drive for Athletics.

The latest gift places Mrs. Herrington in a new organization  
at Ole Miss, the 1848 Society, which provides lifetime recogni-  
tion to those who have made provisions for the University  
through planned testamentary bequests, lifetime trusts, or other  
planned gifts.

The Society sets no minimum gift, and there are a number of  
membership benefits. For more information, contact Tony  
Montgomery, director of planned and deferred giving, at (800)  
340-9542 or e-mail [tmontgom@olemiss.edu](mailto:tmontgom@olemiss.edu). ■



# Commitment to Excellence

*Honoring Remarkable Achievements  
and a New Era of Academic Leadership*



something that would go right along with her father's personality. "He loved the challenge of building and creating. I don't think he really knew the influence he had on the golfing industry in the Mid-South. Golf scholarships at Ole Miss are a perfect way of perpetuating his memory," she said.

"Anytime you endow scholarships, it is great for the Athletics Department and the University as a whole," said Ole Miss men's golf head coach Woody Cowart. "We are so grateful to the Herrington family for this support. We are enjoying better facilities

## We're 150 Going on 2000

This is an exciting time to be a member of the Ole Miss family. We stand at the juncture of our 150th anniversary and the dawn of the 21st century. It is a time to honor remarkable achievements with a new era of academic leadership. Never before have past and future converged at such a compelling threshold.

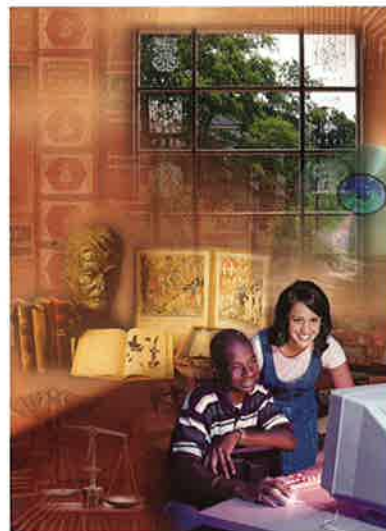
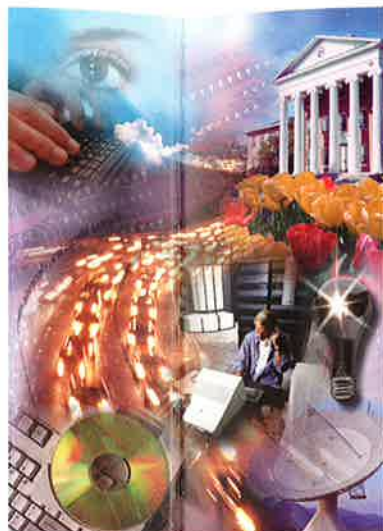
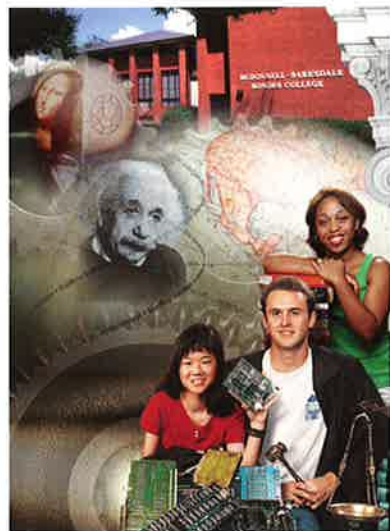
The University of Mississippi is within reach of unprecedented national prominence, eager to take its place at the table of great public universities. But dues in that prestigious club are expensive. Membership requires substantial investment in an array of academic opportunities. Our **Commitment to Excellence Campaign** has a minimum goal of \$200 million to fund those advancements. With the foresight of its benefactors, Ole Miss can create a new era of excellence.



The latest gift places Mrs. Herrington in a new organization at Ole Miss, the 1848 Society, which provides lifetime recognition to those who have made provisions for the University through planned testamentary bequests, lifetime trusts, or other planned gifts.

The Society sets no minimum gift, and there are a number of membership benefits. For more information, contact Tony Montgomery, director of planned and deferred giving, at (800) 340-9542 or e-mail [tmontgom@olemiss.edu](mailto:tmontgom@olemiss.edu). ■





## Commitment to Excellence

Campaign for The University of Mississippi • Ole Miss

I/We will support The University of Mississippi with a gift of \$\_\_\_\_\_ for the following goal(s):

- ☐ Enhance the University Libraries
- ☐ Ensure Academic Preeminence
- ☐ Attract and Retain Exceptional Students
- ☐ Support a World-class Honors College
- ☐ Assure Continuing Excellence on the Health Sciences Campus
- ☐ Provide and Sustain a Competitive Information-technology Infrastructure
- ☐ Cultivate the Cultural Environment of the University Community
- ☐ Where the Need Is Greatest

Name \_\_\_\_\_

Address \_\_\_\_\_

City \_\_\_\_\_ State \_\_\_\_\_ ZIP \_\_\_\_\_

Phone (Day) \_\_\_\_\_ (Evening) \_\_\_\_\_

Signature \_\_\_\_\_

Date \_\_\_\_\_

My pledge of \$\_\_\_\_\_ will be fulfilled as indicated:

☐ Check enclosed. Bill my: ☐ MasterCard ☐ Visa

Card number \_\_\_\_\_ Exp. Date \_\_\_\_\_

Name on card \_\_\_\_\_

Signature \_\_\_\_\_

Payments will be made:

☐ Monthly \$\_\_\_\_\_ Beginning \_\_\_\_\_

☐ Quarterly \$\_\_\_\_\_ Beginning \_\_\_\_\_

☐ Semiannually \$\_\_\_\_\_ Beginning \_\_\_\_\_

☐ Annually \$\_\_\_\_\_ Beginning \_\_\_\_\_

I hereby authorize The University of Mississippi Foundation to publicly recognize this gift as deemed appropriate.

☐ Yes ☐ No

☐ I have enclosed my company's matching gift form.

☐ Please send me additional information.

Please make checks payable to

**The University of Mississippi Foundation.**

The University of Mississippi Foundation is a qualified tax-exempt Corporation under Section 501 (c)(3) of the Internal Revenue Code and, therefore, your contributions are tax-deductible. If you received any items of value for your contributions, the fair market value of these items should be subtracted from your total contributions in calculating your tax-deductible amount. In addition, for those of you who may have made contributions which qualified you for the right to purchase athletic tickets, Section 170 (l) of the Internal Revenue Code of 1986 allows a charitable deduction of eighty percent (80%) of that gift. Please consult your own tax adviser for determining your proper charitable deduction. 1890/2-99

**T**he entire University of Mississippi community—students; faculty, staff, alumni, and administration—has thoroughly and enthusiastically considered the best means to reach our goal of academic excellence. We have constructed a specific seven-point action plan to assure that we realize our full potential:

### I. Enhance the University Libraries

One-time purchases to increase holdings of the J.D. Williams Library to one million volumes by the year 2000 with endowments for continuing acquisitions and development of state-of-the-art library technology.



### II. Ensure Academic Preeminence

Endowments to support an array of academic enrichments, including faculty salary enhancement; new chairs, professorships, and lectureships; department/program excellence; classroom and laboratories improvement; and faculty development support for teaching and research.

### III. Attract and Retain Exceptional Students

Endowments to support undergraduate scholarships for valedictorians and other exceptional student leaders; enrichment activity scholarships for band, choral, and debate students and for study abroad; scholarships for outstanding student athletes; graduate fellowships and scholarships; and Medical Center scholarships.

### IV. Support a World-class Honors College

Endowments to enhance the McDonnell-Barksdale Honors College through scholarships, support for operational expenses, faculty and staff salary enhancements, program development, and academic enrichment.

### V. Assure Continuing Excellence on the Health Sciences Campus

Endowments to fund scholarships, faculty enhancements, research centers, continuing acquisitions, and technology development in the Rowland Medical Library, and special patient-care needs in the Medical Center's teaching hospitals.

### VI. Provide and Sustain a Competitive Information-technology Infrastructure

One-time funding to equip classrooms with appropriate teaching technology and establish additional distance-learning facilities and endowments to support faculty and staff skill development, student collaboration technology, and continuing technology enhancements.

### VII. Cultivate the Cultural Environment of the University Community

Funds to enhance the Gertrude Castellow Ford Center for the Performing Arts with a theater arts and dance facility; music facility for chorus, band, and orchestra, and a music library; a recital hall; Fulton Chapel renovation; a multievent hall; and an endowment to operate and administer the center.

something that would go right along with her father's personality. "He loved the challenge of building and creating. I don't think he really knew the influence he had on the golfing industry in the Mid-South. Golf scholarships at Ole Miss are a perfect way of perpetuating his memory," she said.

"Anytime you endow scholarships, it is great for the Athletics Department and the University as a whole," said Ole Miss men's golf head coach Woody Cowart. "We are so grateful to the Herrington family for this support. We are enjoying better facilities

The latest gift places Mrs. Herrington in a new organization at Ole Miss, the 1848 Society, which provides lifetime recognition to those who have made provisions for the University through planned testamentary bequests, lifetime trusts, or other planned gifts.

The Society sets no minimum gift, and there are a number of membership benefits. For more information, contact Tony Montgomery, director of planned and deferred giving, at (800) 340-9542 or e-mail [tmontgom@olemiss.edu](mailto:tmontgom@olemiss.edu). ■



# *Herrington Joins 1848 Society with \$1.2 Million Gift to Loyalty Foundation*

**C**lay Herrington of Olive Branch was in his 40s when he first picked up a set of golf clubs and discovered the joy of making a birdie putt. From there, he went on to help establish or develop four golf courses, which continue to provide havens for golfers.

When Herrington's family wanted to establish some means of perpetuating his memory and the things he loved, the choice seemed clear: provide scholarships for the Ole Miss golf program. In memory of her husband who passed away in 1995, Mrs. Clay (Elinor) Herrington has committed a \$1.2 million Charitable Remainder Trust to the Loyalty Foundation.

"The Herringtons have been faithful supporters of University of Mississippi athletic programs. These scholarships will make a tremendous difference in the lives of young people who come to our campus to pursue college careers and enjoy golf competition in the Southeastern Conference," said Ole Miss Chancellor Robert C. Khayat. "My own undergraduate studies at Ole Miss were possible because of an athletic scholarship. You always remember and appreciate a scholarship that made your dreams possible."

George Smith, executive director of the Ole Miss Loyalty Foundation, said, "We appreciate tremendously what the Herrington family has done for the Athletics Department over the years. The M.C. Herrington Scholarship Endowment gift is significant and will benefit Ole Miss student-athletes for years to come."

Carol Allen of Olive Branch, the Herringtons' daughter and an Ole Miss alumna, said her family hopes the resources her mother is providing will enhance the Ole Miss golf program—something that would go right along with her father's personality. "He loved the challenge of building and creating. I don't think he really knew the influence he had on the golfing industry in the Mid-South. Golf scholarships at Ole Miss are a perfect way of perpetuating his memory," she said.

"Anytime you endow scholarships, it is great for the Athletics Department and the University as a whole," said Ole Miss men's golf head coach Woody Cowart. "We are so grateful to the Herrington family for this support. We are enjoying better facilities



**Mrs. Clay Herrington of Olive Branch (right) became a member of the 1848 Society by giving a \$1.2 million Charitable Remainder Trust to the Loyalty Foundation. Head golf coaches Woody Cowart (center) and Keil Purdom (left) were on hand to express appreciation for the gift.**

and recruiting better players, and the building process comes a step at a time. This gift, however, provides a major boost to our program as well as great encouragement."

Ole Miss women's golf head coach Keil Purdom agreed, saying, "Our future is bright thanks to this extraordinary gift from the Herrington family. Their generous resources will ensure the future of our program, including the recruitment of student athletes. We're very fortunate to have such loyal supporters."

The former mayor of Olive Branch, Herrington was among citizens who helped establish the Olive Branch Country Club. He also was part of a group that helped develop an industrial park, which became home to Holiday Inn's corporate training facility and the Holiday Golf Club—one of the first daily fee golf courses in the Memphis area.

Herrington next developed Plantation Golf Club, carefully planning every hole on the course. It is one of only two in the area with zoysia grass fairways and surrounded by a premier planned neighborhood. Son Mike Herrington of Olive Branch,

an Ole Miss alumnus, manages Plantation Golf Club.

"I think he would be really honored if he knew about the scholarships," Allen said of her father. "He loved Ole Miss so much; he just loved everything about it."

Mr. and Mrs. Herrington have been longtime supporters of the University, providing resources to the recent expansion of Vaught-Hemingway Stadium, scholarships, Pride of the South marching band, Athletic Training Center, Loyalty Foundation, and Drive for Athletics.

The latest gift places Mrs. Herrington in a new organization at Ole Miss, the 1848 Society, which provides lifetime recognition to those who have made provisions for the University through planned testamentary bequests, lifetime trusts, or other planned gifts.

The Society sets no minimum gift, and there are a number of membership benefits. For more information, contact Tony Montgomery, director of planned and deferred giving, at (800) 340-9542 or e-mail [tmontgom@olemiss.edu](mailto:tmontgom@olemiss.edu). ■

# *The University of Mississippi Foundation* **Board of Directors**

## **1998-1999 Officers**



**Aubrey B. Patterson, Jr.**  
Chair



**Roger M. Flynt, Jr.**  
Chair-Elect



**Don L. Frugé**  
President/CEO



**Steve Owens**  
Secretary/Treasurer

## *Foundation Welcomes New Members*



**Bryan Barksdale ('68, '72)**

**Bryan Barksdale** (B.S. '68; M.D. '72) and his wife, Jane Anna, reside in Jackson, Miss., where he is a physician, practicing Cardiology and Internal Medicine. He holds membership on the American Medical Association, American College of Cardiology, American College of Physicians, Mississippi Medical Association, Jackson Academy of Medicine, and the American Society of Echocardiography. Dr. Barksdale is a Fellow of the American College of Medicine and the American College of Cardiology and is a Board Member of the YMCA, American Heart Association, Mississippi Arthritis Foundation, The University of Mississippi Medical Alumni Association, and Guardian Society. He is a past president of the Mississippi Heart Association, the Ole Miss Alumni Association, and The University of Mississippi Foundation. Awards presented to Barksdale include the Service to Mankind Award, YMCA, 1981; Volunteer Service Award, State of Mississippi, 1987; National Volunteer Service Award, Arthritis Foundation, 1989; Mississippi Heart Association Volunteer Award, 1993; and National Distinguished Program Award, YMCA, 1996.



**Louis K. Brandt ('59)**

**Louis K. Brandt** (B.A. '59) received a second degree (B.S. in Electrical Engineering) from the University of Texas in 1964. He and his wife, Allison, reside in Houston, Texas, where he is president/owner of Montana Capital L.L.C. and Timberwilde, Inc., and president of B.M.A., Inc. He has served as president of The University of Mississippi Foundation from 1992-1994 and was inducted into the Ole Miss Hall of Fame in 1993. Brandt is a founding director of Child Advocates, Inc.; served on the Board of Directors of the Tourette Syndrome Associa-



tion; St. Martin's Episcopal Church Vestry; and the River Oaks Breakfast Club.

**David E. Brevard** (B.A. '78) received a second degree (M.B.A.) at the Darden School, University of Virginia, in 1981. He and his wife, Shawn, and their two daughters reside in Tupelo, Miss., where he is president of B & B Concrete Company, Inc. Brevard is a former president and current member of the Mississippi Concrete Industries Association, a member of the Yocona Council Executive Committee and Board, North Mississippi Health Services Foundation, Kiwanis Club, Community Development Foundation, and United Methodist Senior Services of Mississippi. As an active member of the First United Methodist Church, Brevard also serves as a lay leader and a member of the administrative board. He is vice president of the Board of Directors of the Church Street Elementary School PTA and president-elect of the University of Mississippi Alumni Association. A member of Phi Kappa Phi, Brevard was named to Who's Who Among Students in American Colleges and Universities. As a student at Ole Miss, Brevard was a Carrier Scholar and also inducted into the Hall of Fame.

**Jan Griffith Farrington** (B.A. '65) is currently executive director of the Medical Support & Development Organization, Inc. She and her husband, Lawrence, reside in Jackson, Miss. Farrington, formerly served as the chairman of the board for the American Heart Association as the Mississippi affiliate. She is a member of the Board of Directors for the Jeff Anderson Regional Medical Center in Meridian, Miss., and is currently serving as president of The University of Mississippi Alumni Association. While at Ole Miss, she served as vice-president of the Mortar Board and participated in the University Singers, the Baptist Student Union, and Delta Delta Delta Sorority.

**Don L. Frugé** (B.B.A. '67, J.D. '70) received a master of laws degree in taxation from New York University in 1971. He joined the law faculty in 1971 and has served the University in a number of capacities throughout the years including professor of law, executive director of development, vice chancellor for university advancement, and head golf coach. Currently, he serves as president/CEO of the University Foundation and professor emeritus of law. Frugé serves as president of the Oxford-Lafayette County Economic Development Foundation and the Old Waverly Foundation. He holds membership in the Mississippi State Bar, the American Bar Association, is a fellow of the Mississippi State Bar Foundation, and immediate past-chairman of the Estate and Trust Section. Frugé is a director and chairman of the Audit Committee of Hancock Fabrics, Inc. As a member of Phi Beta Kappa, Frugé was named to Outstanding Young Men of America, 1972, and Alumnus of the Year, Beta Alpha Psi, 1991. As a student at Ole Miss, Frugé served as president of Omicron Delta Kappa, treasurer of Sigma Chi Fraternity, captain of the Ole Miss Golf Team, a member of Beta Alpha Psi, and was named to Who's Who Among Students in American Colleges and Universities. He and his wife, Mary Ann, reside in Oxford, Miss., and they have one son, Don, Jr.



**David E. Brevard ('78)**



**Jan Griffith Farrington ('65)**



**Don L. Frugé ('67, '70)**



**George P. Hewes III ('50, '54)**



**Bernice Hederman Hussey ('62)**



**Charles M. Merkel, Jr.  
( '64, '66)**



**Frank M. Mitchener, Jr.**



**Aubrey B. Patterson, Jr. ('66)**

**George P. Hewes III** (B.B.A. '50; J.D. '54) is an attorney with Brunini, Grantham, Grower and Hewes. He and his wife, Joan, reside in Jackson, Miss. Hewes is a past president of The University of Mississippi Alumni Association, The University of Mississippi Foundation, the Mississippi Bar Foundation, and the Jackson Symphony Orchestra Association. He is a member of the Lamar Order and the Law Alumni Chapter at Ole Miss. Hewes is currently a member of the Board of Directors of Trustmark National Bank and formerly served as campaign chairman for the United Way and on the Board of Regents of the American College of Trial Lawyers. While at Ole Miss, he was president of the Law School Student Body and was a member of the YMCA, "M" Club, Sigma Alpha Epsilon, and inducted into the Hall of Fame. He is currently serving as co-chair of the Sesquicentennial *Commitment to Excellence Campaign* at The University of Mississippi.

**Bernice Hederman Hussey** (B.A. '62) resides in Memphis, Tenn., where she is owner of Babcock Gifts. Hussey is an elder at the Idlewild Presbyterian Church and serves on the board of the Thomas W. Briggs Foundation, the Cripple Children's Foundation, the Memphis Botanic Garden, the Dixon Gallery and Garden, and the Little Garden Club. Hussey previously served on the board of the Children's Museum and the Memphis Symphony League.

**Charles M. Merkel, Jr.**, (B.A. '64; J.D. '66) received a second degree (L.L.M) from Georgetown University in 1970. He and his wife, Donna, reside in Clarksdale, Miss., where he is a trial attorney. He is on the American Board of Trial Advocates and is a member of the American College of Trial Lawyers, the Mississippi & American Trial Lawyers Associations, the Mississippi Bar Foundation, and is featured in America Who's Who. He has also served on the board of the Lula Rich Educational Foundation in Clarksdale, Miss.

**Frank M. Mitchener, Jr.**, received his B.S. from Davidson College in 1995. He and his wife, Judith, reside in Sumner, Miss. Mitchener was president of the National Cotton Council in 1981, director of the St. Louis Federal Reserve Bank from January 1, 1987, to December 31, 1992, and has been chairman of the Rhodes College Board of Trustees since 1993.

**Aubrey B. Patterson, Jr.**, (B.B.A. '66) received a second degree (M.B.A.) from Michigan State in 1969. He and his wife, Ruby Kathryn, reside in Tupelo, Miss., where he is chairman and CEO of BancorpSouth. Patterson has served as chairman of Tupelo's Community Development Foundation and the Mississippi Economic Council. He is past-president of the Mississippi Bankers Association and a director of North Mississippi Health Services and the Presbyterian Church USA Foundation.



**Richard F. Scruggs** (B.A. '69, J.D. '77) is a senior partner with the Scruggs, Millette, Lawson and Dent P.A. law firm. He and his wife, Diane, reside in Pascagoula, Miss. Scruggs is a fellow in the International Academy of Trial Lawyers and the president of Russell-Blass-Walker Chapter of the American Inns of Court. He is a former Navy carrier pilot and most recently noted for his role in the State of Mississippi's pioneering litigation to recover public health care expenditures from the tobacco industry. He was named 1997 Mississippi Citizen of the Year by the March of Dimes Birth Defects Foundation; is a member of the Rotary Club; and serves as a director of Central Mississippi Legal Services Corporation, South Mississippi Legal Services Corporation, Piney Woods Country Life School; Pine Burr Area Council of the Boy Scouts of America; and the American Cancer Society. Scruggs was the 1993 fundraising event chairman of the American Cancer Society and the 1995 King of Hearts of the American Heart Association. While at Ole Miss he was a member of Omicron Delta Kappa and on the editorial board of the *Mississippi Law Journal*.



**Richard F. Scruggs ('69, '77)**

**Jay A. Travis III** (B.B.A. '62, J.D. '65) is a partner with Butler, Show, O'Mara, Stevens and Cannada. He and his wife, Judith, reside in Jackson, Miss. Travis serves on the National Board of Regents and as Mississippi chair of the American College of Trust and Estate Counsel, as well as president of the Mississippi Estate Planning Council and a member of the Mississippi Bar Association. He has provided a wealth of leadership through service as president of The University of Mississippi Law Alumni Association; as president of the Mississippi Bar's Young Lawyers Section and chair of its Estates and Trusts Section; president of the Fellows of the Young Lawyers; and director of the Mississippi Heart Association. Travis was listed in The Best Lawyers in America (Trusts and Estates) for 1989-1998. While at Ole Miss, he served as president of Omicron Delta Kappa, Phi Delta Phi, Delta Sigma Pi, and the Law School Senior Class. Travis was a member of Phi Kappa Phi and Beta Gamma Sigma and served as editor in chief of the *Mississippi Law Journal*. He graduated magna cum laude from the School of Law and received the Phi Delta Phi award for the highest three-year academic average.



**Jay A. Travis III ('62, '65)**

**Rodney Faser Triplett, M.D.** (B.A. '55; M.D. '59) is a Physician/Allergist with the Mississippi Allergy and Asthma Clinic. He and his wife, Jackie, reside in Jackson, Miss. He has served as president of The University of Mississippi Medical Alumni Association, the American College of Allergy, Asthma, & Immunology, The University of Mississippi Alumni Association and Mississippi State Medical Association; president and chairman of the Medical Assurance Company of Mississippi since 1976; and chairman of the American Medical Association Political Action Committee. Triplett has been a delegate to the American Medical Association representing the American College of Allergy, Asthma, & Immunology since 1983. While at Ole Miss, he received the Taylor Medal in Speech and Political Science, was president of Phi Eta Sigma and the College of Liberal Arts, was vice president of Omicron Delta Kappa, and participated as a cheerleader.



**Rodney Faser Triplett ('55, '59)**

# Phi Beta Kappa Team Visits Oxford Campus for Three Days, Interviews

**T**he University of Mississippi hosted long-awaited visitors on campus Jan. 31-Feb. 2, when leaders from the nation's oldest and most respected undergraduate honors organization considered whether the state's oldest public university is worthy of one of its chapters.

Dr. Ira Fischler, a psychology professor at the University of Florida, led the Phi Beta Kappa site team's three-day visit. Other team members were Dr. Allison Blakely, a history professor at Howard University, and Dr. Solomon Gartenhaus, a physics professor at Purdue University.

Phi Beta Kappa's evaluation included extensive study of the University's endowments, library holdings, technological resources, strength of the College of Liberal Arts, quality of students (based on test scores), scholarships, and other considerations.

According to Dr. Ronald Schroeder, chair of the Ole Miss Phi Beta Kappa Faculty Application Committee and an English professor, the site team met and interviewed administrators, faculty, and students and toured campus facilities.

If Ole Miss' bid is approved, it will join an elite group of state universities and colleges that shelter a Phi Beta Kappa chapter. The rigorous process requires the site team to make a recommendation to the Committee on Qualifications, which makes a recommendation to the Senate of Phi Beta Kappa. If the Senate supports a recommendation in December 1999, a membership vote by the full Council of the organization will occur in fall 2000.

"The University community was obviously very excited to have this opportunity to show Phi Beta Kappa officials the progress our University has made in all areas," Ole Miss Chancellor Robert Khayat said. "The overriding question the site team members considered as they examined our academic envi-

ronment and resources was whether or not The University of Mississippi is committed to excellence in the humanities, arts, and sciences. I felt very positive about the visit, as the team seemed to look favorably on the McDonnell-Barksdale Honors College and the J.D. Williams Library; the strengthened (liberal arts) faculty salaries; the diversity of our faculty, staff, and students; and the increase in entering freshman ACT scores over a five-year span.

"Phi Beta Kappa sets extremely high standards, and for Ole Miss to be successful, we must continue our commitment to excellence," said the chancellor.

Since Ole Miss announced its intentions to seek a Phi Beta Kappa chapter, Khayat said that alumni and friends have stepped forward with "extraordinary gifts" to strengthen the entire University. "Our endowment has experienced phenomenal growth, now totaling more than \$204.3 million," he said. "The tremendous support that we have received has been deeply inspiring. Alumni and friends understand what is needed to put Ole Miss in a place

of national prominence."

The University received a favorable reaction from Phi Beta Kappa headquarters when Ole Miss officials delivered the application in the fall, said Schroeder.

"We're in the best position ever to realize this dream. A Phi Beta Kappa chapter would give The University of Mississippi recognition and visibility in a group of very elite schools across the nation," Schroeder said. "Being chosen for a chapter would be an endorsement of the quality of our College of Liberal Arts and of our commitment to academic excellence."

For more than 200 years, the Phi Beta Kappa Society has pursued its mission of fostering and recognizing excellence in the liberal arts and sciences. ■



## Award of Excellence...

**The *Commitment to Excellence Campaign's* Case Statement has captured a regional Award of Excellence from the Council for Advancement and Support of Education District III Advancement Awards Program. The creation of The University of Mississippi Publications Office in the Department of Public Relations and Marketing, the Case Statement was one of 10 chosen for an award from a field of 34 entries. The Case Statement was on display at the District III Conference in Charlotte, N.C., and now will go into the CASE III archives at Georgia State University. The stunning full-color Case Statement outlines the goals of the *Commitment to Excellence Campaign*.**



# Memphis Couple Establishes Study-Abroad Scholarships for Honors College Students

**S**ome University of Mississippi students in the McDonnell-Barksdale Honors College will enjoy gaining a second education in a different culture, thanks to a new scholarship endowment for study-abroad opportunities.

Ole Miss alumna Lynda M. Shea of Memphis and her husband, Dr. John J. Shea, have committed \$100,000 to establish the Lynda M. Shea Honors Endowment, with the first academic study-abroad scholarships available in 2000. Recipients will be selected by the Honors College faculty.

"Our goal at The University of Mississippi is to maximize the depth and intensity of our students' educational experiences," said Ole Miss Chancellor Robert Khayat. "With this generous gift from Lynda and John Shea, students in our McDonnell-Barksdale Honors College will be given the extraordinary opportunity to explore and experience the culture, languages, and economics of other countries in our global community. The Sheas' insightful gift will have a tremendous, life-changing impact on students chosen for the scholarships."

Dr. Elizabeth Payne, director of the Honors College, said, "This gift from Dr. and Mrs. Shea launches our effort to provide stipends for honors students who want to study abroad. McDonnell-Barksdale Honors College students are grateful to the Sheas for their vision and generosity."

Mrs. Shea—owner of French Country Imports in Memphis, a former Miss America, and a member of the Ole Miss Hall of Fame—and her husband recently toured the McDonnell-Barksdale Honors College on the Oxford campus. "John and I were so impressed," she said. "The Honors College is such a splendid program. We are grateful to (Ole Miss alumnus) Jim Barksdale and his family for establishing the Honors College and are delighted to have a part in its growth."

As to their selection of study-abroad opportunities as the focus of the Shea Scholarships, Mrs. Shea said she always has "one foot in Europe" searching for unusual antiques for her business and also lived in Europe for a year after graduating from Ole Miss and studying at the Parsons School of Design in New York.

"There's so much to learn from the world," the antiques expert said. "John and I wanted Ole Miss students to know the world and have the broadening experience that comes from travel."

Mrs. Shea said the couple's decision to establish a scholarship also was based on the current leadership of Chancellor Robert Khayat. "He has inspired so many to be part of his great vision for the University," she explained. "Ole Miss is experiencing one of the most progressive periods that I have ever witnessed, and the credit is primarily due to Chancellor Khayat. He has such a wonderful way of communicating his vision that alumni and friends become excited and want to be a part of it."



**Lynda Mead Shea (second from left) and her husband Dr. John Shea (right) were recently on campus to establish the Lynda M. Shea Honors Endowment. Visiting with them at the McDonnell-Barksdale Honors College were Chancellor Robert Khayat (second from right), Ole Miss alumnus Dr. Mary Campbell Stewart (center) and Dr. Elizabeth Payne, Honors College director.**

A native of Natchez, Mrs. Shea first visited Ole Miss as a high school student and decided to make it her college home. "I think of my years there with great fondness. Ole Miss was a place that we did not look forward to leaving upon graduation," she recalled. "It was a wonderful interlude in our lives."

The Honors Program at Ole Miss expanded to become the McDonnell-Barksdale Honors College in 1996, when Netscape CEO Barksdale and his wife, Sally McDonnell Barksdale, provided an endowment for the college. The mission of the Honors College, which now has an enrollment of 352 students, is to pro-



*"John and I wanted Ole Miss students to know the world and have the broadening experience that comes from travel."*

Lynda Mead Shea

vide a center of excellence that merges personal commitment to public service with superior academics in order to create a more promising future in Mississippi and the world beyond.

Individuals and organizations can contribute to the Lynda M. Shea Honors Endowment by contacting The University of Mississippi Foundation at P.O. Box 249, University, MS 38677; phone 800-340-9542; e-mail [umf@olemiss.edu](mailto:umf@olemiss.edu). ■

---

# Ole Miss Ranks Seventh Among Public Universities With Rhodes Scholars

---

**T**he selection of University of Mississippi senior Calvin Thigpen as Ole Miss' 24th Rhodes Scholar has propelled the University into a seventh-place tie among the country's public universities in production of the prestigious scholars.

Of the 624 public universities in the United States, only six have produced more Rhodes Scholars than Ole Miss: the universities of Virginia, North Carolina, Washington, Wisconsin, Montana and Texas. Ole Miss is tied with the universities of Michigan and Oklahoma and West Virginia University for the seventh-place spot.

"As part of our commitment to being one of America's great public universities, The University of Mississippi continually encourages our students to apply for coveted awards and scholarships such as the Rhodes Scholarship," said Ole Miss Chancellor Robert Khayat.

"The University's ranking is a true testament not only to the high caliber of students at Ole Miss, but also to the leadership, knowledge, and direction imparted by our dedicated faculty and staff," Khayat added.

"The Rhodes Scholarship is the most coveted and most competitive in the world, and we are extraordinarily fortunate in having had 24 scholars chosen from this institution," said Dr. Elizabeth Payne, director of Ole Miss' McDonnell-Barksdale Honors College and a history professor.

"The Rhodes Scholarship is based on academic achievement, personal character, leadership ability, and physical vigor. In addition,



**Calvin Thigpen, Rhodes Scholar**

tion, the institution must invest substantial effort in the student's application, as the committee looks at the quality of the letters of recommendation and the institutional endorsement as much as the student's part of the application," Payne continued.

Payne, who assisted Thigpen with his application and interview preparation, said the student's effort involved in applying for a Rhodes scholarship is the equivalent of taking a three-hour course. Thigpen was chosen from 909 applicants who were endorsed by 310 colleges and universities in a nationwide competition.

The son of Dr. and Mrs. James Tate Thigpen of Jackson, Thigpen holds a 4.0 grade-point average with a double major in chemistry

and math. The Ole Miss track team member served as the 1997-98 Associated Student Body president and was named to the student Hall of Fame. Thigpen follows Ole Miss' last Rhodes Scholar, Dr. Damon Moore, named in 1987.

Through his last will and testament, Cecil J. Rhodes a British colonial pioneer and statesman who died on March 26, 1902, established the Rhodes Scholarships to bring leading students from throughout the English-speaking world to study at Oxford University in England, his alma mater. Rhodes named nine beneficiary countries in his will, and since 1904 other countries have been added to the list. In 1976, the Rhodes Scholarship Committee opened the competition to women. Thirty-two Rhodes Scholarships are awarded annually in the United States. ■

---

## The University of Mississippi Foundation

*The University of Mississippi Foundation is a nonprofit corporation duly chartered by the State of Mississippi to operate exclusively for the benefit of The University of Mississippi. Its purpose is to receive, solicit, accept and hold, administer, invest, and disburse any and every kind of property for such educational, scientific, literary, research and service activities.*

*The goal of the Foundation is to provide The University of Mississippi with a margin of excellence by supplementing funds received from the State of Mississippi with private financial support.*



# Renowned Latin American Scholar Delivers 38th Christopher Longest Lecture

**M**erlin H. Forster—among the world's leading authorities on Latin American poetry, especially the vanguard poetry of the 1920s and 1930s—delivered The University of Mississippi's 38th Christopher Longest Lecture Nov. 17.

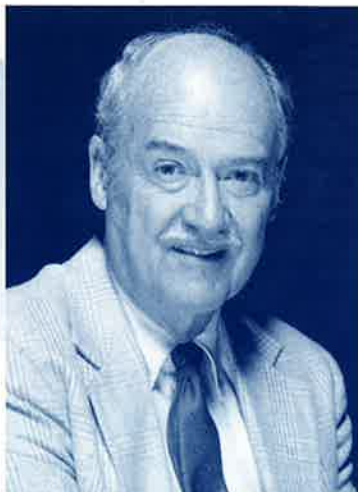
Forster's presentation, titled "Language as Aesthetic Object: Visual Poetry in the Spanish American Avant-garde," focused on the lively and influential Latin American poetry of the early 20th century. The event was presented by the Ole Miss Department of Modern Languages.

"The vanguard poets of the 1920s and 30s experimented heavily with literary forms, so their work is visual as well as verbal. For that reason, Dr. Forster used an overhead projector so the audience can see the poems he discussed," said Dr. Melvin Arrington, Ole Miss professor of modern languages.

In part, Forster traced the impact of the vanguard poets on Nobel prize-winners Pablo Neruda of Chile and Octavio Paz of Mexico. Neruda won the Nobel Prize for Literature in 1971, Paz won it in 1990. "Both of these great poets, at some point in their careers, were influenced by the earlier work," said Arrington.

The Longest Lecture, the oldest endowed lecture series at Ole Miss, was established in 1960 to honor Dr. Christopher Longest, language professor at the University from 1908 until his retirement in 1951. He held the title of Professor Emeritus of Modern Languages until his death in 1961.

"The Longest Lecture is one of the highlights of the year for the department of modern languages, and we are grateful for the



Merlin H. Forster

continued support of the Longest family that makes it possible," said Arrington. "Dr. Forster is a brilliant scholar and speaker."

Forster began his academic career at Brigham Young University in the 1950s and subsequently held lengthy posts at the University of Illinois, where he was director of the Center for Latin American Studies; and at the University of Texas, where he chaired the largest Spanish department in the country. He then returned to BYU, where he was the H. Darrel Taylor Distinguished Professor of Latin American Literature from 1986 until he retired last June. Forster maintains a full schedule of writing and lecturing.

He has published widely in books, reference works and professional journals. His works include: *Los Contemporaneos: 1920-1932*, a groundbreaking monograph on the Mexican vanguard poets; *Fire and Ice: The Poetry of Xavier Villaurrutia*, a seminal study of one of the leading figures of the Contemporaneos group; *Historia de la poesia hispanoamericana*, a standard resource for students and scholars alike; *Tradition and Renewal*, an edited volume of essays on twentieth-century Latin American literature; and *Vanguardism in Latin American Literature*, the primary reference guide to the avant-garde.

Perhaps most indicative of the vital role Forster has played as teacher, researcher, and administrator is the impressive roster of scholars for whom he served as dissertation director, a list which contains the names of some of the most well-respected scholars of Hispanic literature active today. ■

## Freedom Forum VP Addresses Journalism Students

Jack Hurley, vice president of broadcasting for the Freedom Forum, recently spoke to University of Mississippi journalism students.

Burnis Morris, holder of the Talbert Lectureship in Journalism at Ole Miss, invited Hurley to evaluate a Channel 12 student broadcast and then speak to students in broadcast journalism and history classes.

"It's important that students encounter very competent professionals who have gone through what they are about to go through, so the students can learn from those experiences," Morris said.

Established in 1991, the Freedom Forum is a nonpartisan, international foundation dedicated to free press, free speech and free spirit for all people. The foundation pursues its priorities through conferences, educational activities, publishing broadcasting, online services, fellowships, partnerships, training, research and other programs.



## Award Winning Advertising Executive Receives Otho Smith Medal



**J**oe Kilgore, (right) an advertising professional who has created campaigns for corporate giants American Express and Kodak received a medal of appreciation from Dr. W. Randy Boxx (left), dean of business administration.

Kilgore, a senior partner and executive creative director of Ogilvy & Mather in Houston, Texas, presented the public lecture "The Changing Images of Men and Women in Advertising."

The 27-year advertising veteran began his career at the age of 20, working in the mailroom of McCann-Erickson. A path through print production, traffic, and account service led the future four-time David Ogilvy Award-winner to copywriter position at Ogilvy & Mather that quickly evolved into a string of executive positions.

He has won local, regional, national, and international awards for his clients—which have also included Shell Oil, IBM, Equal, Compaq, Sears, and the Nuclear Energy Institute—as well as helped them increase marketplace sales.

The Otho Smith Lecture Series was created in memory of the late Otho Smith, a Meridian businessman and philanthropist, to bring international leaders to the Oxford campus. ■

## Graeber Scholarship Fund Grows to \$500,000, Rewards Sophomores who Excel

**L**ewis Graeber of Marks believes "children and education are very important in our lives."

With that priority in mind, Lewis and his wife, Frances, established a scholarship fund in 1996 at Ole Miss with a \$100,000 gift. The endowment has quickly grown to \$500,000 with their continued commitment to helping students.

"Lewis and Frances have always been loyal, enthusiastic supporters of this University, and we deeply appreciate their generosity," said Chancellor Robert Khayat. "By creating this scholarship fund they ensure that current Ole Miss students, as well as generations of students to come, will have the support needed to realize their dreams. The Graebers have made a tremendous investment in the future. This family's influence will impact our students who, in turn, will impact this state, nation, and world."

The Lewis and Frances Graeber Scholarship Fund is set up to reward students who excel during their freshman year of studies in academic achievement and leadership ability but do not receive any scholarship assistance during that time. A sophomore student selected as a recipient will be eligible to receive the Graeber Scholarship through graduation if he or she maintains a 3.5 grade-point average.

"One of the things that sets a major university apart from others is scholarship support for outstanding students," said Ole Miss Provost and Vice Chancellor for Academic Affairs Gerald Walton. "Being able to reward good students for their hard work is always a gratifying experience. This type of scholarship enables us to single out dedicated students after they have been here for a couple of semesters and reward them for their excellent academic records."

Scholarship recipient Ellie Rolfes, a

junior Spanish major, said, "Mr. and Mrs. Graeber are very special people in my life. I was thrilled to be the first recipient of their scholarship. I work doubly hard here at Ole Miss not to disappoint them in the classroom. I think about that a lot."

Through the scholarship, Mr. Graeber said he and his wife want to recognize students who come to Ole Miss and as freshmen and give their best effort to their college studies. "We think there might be students who do not receive scholarship help as freshmen but who really deserve it

based on their first-year grades. Ole Miss is a great university, and it's enjoying the best leadership it has ever had with Robert Khayat. We just wanted to do something to help students."

The Graebers, who are members of the Chancellor's Trust, have also provided support to Ole Miss through the Loyalty Foundation, the Alumni House

renovation project, Athletic Training Center, and the Friends of the Museums.

Mrs. Graeber graduated from Ole Miss in 1941, earning an undergraduate degree in education. Mr. Graeber calls himself a "walk-on" Ole Miss alumnus, becoming a loyal fan and supporter through the years. He received his undergraduate degree from Rhodes College. They have four children—Geri Graeber Pitts of Memphis, Lewis Graeber III of Jackson, and Clark and William Graeber, both of Marks—and seven grandchildren. Three children and two of their spouses are Ole Miss graduates, and a granddaughter, Frances Graeber Pitts, is a current Ole Miss student.

"We love being on campus and attending football games in the fall," Mr. Graeber said. "We seem to know so many Ole Miss people and enjoy spending time with them." ■



Ellie Rolfes



# UM Welcomes Alum, International Journalist to Campus

**U**niversity of Mississippi alumnus and leading international financial journalist Terry Wooten spoke to journalism and business students on the Oxford campus.

Wooten of London serves as editor in chief of *Financial News* and *Futures World News*. He supervises 50 key financial journalists around the world and also has offices in Frankfurt, Paris, New York, Chicago, Sao Paulo, Melbourne, and Washington. The Pontotoc native, who now provides financial news to over 50,000 financial screens around the world each day, got his start at the *Kosciusko Star-Herald* and the *Northeast Mississippi Daily Journal* in Tupelo.

The 1963 Ole Miss graduate's career has spanned 35 successful years during which he has worked for United Press International in Mississippi and Virginia, as well as newspapers in Mississippi; Alexandria, Va.; Kansas City, Mo.; and Wichita, Kan.

"Terry Wooten would describe himself as a country boy



**Terry Wooten of London spoke to journalism and business students on the Oxford campus as part of the Otho Smith Lecture Series.**

from Pontotoc, but he is typical of the Ole Miss journalism graduates who have assumed leadership roles around the world. His organization and its reporting of financial markets impact every economy in the world," said Dr. Ed Meek, a former classmate of Wooten's and recently retired assistant vice chancellor for public relations and marketing.

As an Ole Miss student and a member of the National Guard, Wooten assisted in the enrollment of James Meredith, the first black student at Ole Miss.

While serving as editor of the Alexandria, Va., *Gazette* in 1974, the young journalist spent three days hot on the trail of Gerald Ford, as he awaited a call from the White House at the end of President Richard Nixon's administration.

The lecture series was created in memory of Otho Smith, a Meridian businessman and philanthropist, to bring national and international leaders to the Oxford campus. ■

## Gift Featured on Slate Magazine's List

**A**\$25 million commitment to The University of Mississippi has been featured online in "The Slate 60 Quarterly Update."

The Internet magazine edited by Michael Kinsley recognizes the 60 largest American personal charitable contributions each quarter. Richard and Diane Scruggs of Pascagoula were featured for the \$25 million the couple has designated for liberal arts faculty salary support.

Richard Scruggs, who holds undergraduate and juris doctor degrees from Ole Miss, announced the gift at the fall faculty meeting on the Oxford campus. "My wife and I wanted to help ensure that Ole Miss is able to attract and keep the best teachers available; universities operate in a very competitive world."

The \$25 million gift is expected to strengthen Ole Miss' chances of attracting a prestigious Phi Beta Kappa chapter, which, if granted, will be the first at a public university in Mississippi. A site team for Phi Beta Kappa visited the University

Jan. 31 through Feb. 2.

The 1998 third-quarter "Update" actually numbers 65 because the last nine contributors all are tied at No. 57 with gifts of \$3 million. Among other gifts listed with the one to Ole Miss were those to the Salvation Army from Joan Kroc, widow of the founder of McDonald's; to the University of Arkansas College of Business Administration from the Sam and Helen Walton family, founders of Wal-Mart; and to Johns Hopkins University from Michael R. Bloomberg, founder of the worldwide multimedia news service Bloomberg LP.

*Slate* is the online magazine of news, politics, and culture. ■



## Fortune 500 Executive Gives Otho Smith Lecture



**U**niversity of Mississippi alumnus Jim Autry, (second from left), an author and former Fortune 500 executive, spoke at The University of Mississippi in the Otho Smith Lecture Series. Provost Gerald Walton, (second from right) presented Autry with a medal in recognition of his lecture to students in the School of Business Administration. Associate Dean Del Hawley, (far left) and Dr. Dwight Frink, (far right) assistant professor of management and marketing, also were on hand for the presentation.

"Mr. Autry is a good friend of the department and one of our most distinguished graduates," said Dr. Stuart Bullion, chair of the Ole Miss Department of Journalism. "He is a great renaissance man who embodies the breadth and depth of achievement we want all our graduates to have."

Autry joined Meredith Corporation in 1960 as copy editor of *Better Homes and Gardens*. He was appointed managing editor and held numerous high-level positions with the publishing giant. At the time of his retirement in 1991, he was serving Meredith Corporation as senior vice president and president of its magazine group. The corporation created a journalism scholarship in Autry's name at Ole Miss.

Autry is a member of both the Ole Miss Student Hall of Fame and the Alumni Hall of Fame and also was named a Distinguished Alumnus. A published poet and author of six books, including the recent *Real Power: Business Lessons from the Tao Te Ching*, Autry serves on the journalism department's professional advisory committee.

The Otho Smith Lecture Series in the School of Business Administration is funded by the Phil Hardin Foundation of Meridian. ■

## Hearin Foundation Brings Noted Economist to Ole Miss Business School

**E**conomist and University of Arizona (UA) professor Vernon L. Smith—one of the founding fathers of experimental economics—presented the second Hearin Foundation Lecture at The University of Mississippi on Nov. 18.

The economist is widely acknowledged as a pioneer in the application of laboratory methods of social science. He directs the Economic Science Laboratory at UA, where he is a Regents Professor and the McClelland Professor of Economics. The publisher of nearly 200 articles and 11 books, he also has received 26 research grants—17 of which came from the National Science Foundation.

"Because of Dr. Smith's innovative research method, economists can empirically evaluate theories and models in a way that was unknown to them 20 years ago. This has significantly increased the scope of economics as a science," said Dr. Mark Van Boening, an Ole Miss associate professor of economics and finance. "From a practical perspective, we can use laboratory data to help formulate policy in a variety of situations—financial markets, natural gas and electrical power industries, and the Federal Communications Commission spectrum auctions are examples."

Smith is a distinguished fellow in the American Economic Association and a fellow in the Econometric Society, the American Academy of Arts and Sciences, the American Association for the Advancement of Sciences, and the Center for the Advanced Study of Behavioral Sciences. He holds degrees from the California Institute of Technology, the University of Kansas and Harvard University, and has taught at Purdue and Brown universities and the University of Massachusetts. In 1995, the sought-after consultant was named Professor of the Year by Anderson Consulting.

The Hearin Lecture Series in the business school is made possible through a \$5 million grant from the Robert M. Hearin Support Foundation. Selected from the most outstanding universities and the most dynamic corporations in the nation, speakers in the series focus on topics of crucial importance to the future of Mississippi and the nation. The first lecturer in the series was Dr. Gary Becker, a University of Chicago professor and the 1992 Nobel Laureate in Economic Sciences. ■



**University of Arizona Professor Vernon L. Smith recently spoke to University of Mississippi students in the School of Business Administration as part of the Hearin Foundation Lecture Series.**





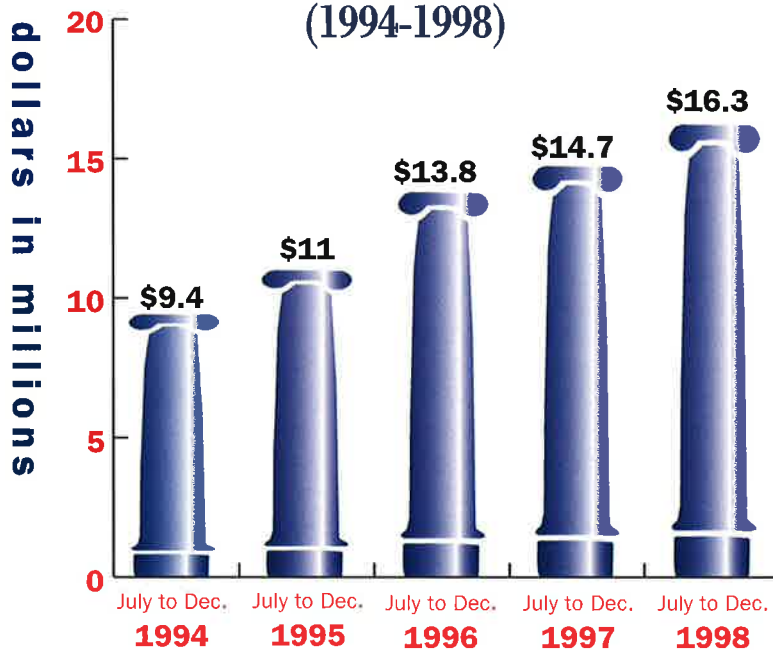
A Message From:

**Don L. Frugé,**

*President/CEO of The University of Mississippi Foundation*

Private support from our alumni and friends for the first six months of fiscal year 1998-99 reached an all-time high of \$16.3 million. For the month of December, 1998 alone, private gifts peaked at over \$7 million. Of this \$7 million, the Foundation receipted just over \$4.5 million in December, which is \$1.2 million more than in any other December in the Foundation's 25-year history. We thank you for your ever increasing support of the University.

## First Six Months Private Support Results (1994-1998)



In recognition of your generosity, the *Chronicle of Philanthropy* in their Philanthropy 400 report just ranked us number 217 out of all charitable and educational institutions in America based on 1997 contributions. This was up from number 294 the previous year. Additionally, the total Foundation and University Endowment continues to grow in support of the University and places us 160th nationally among all colleges and universities.

The *Commitment to Excellence Campaign*, publically announced in November, has raised in the quiet phase and first month of the public phase \$130.9 million in actual receipts and deposits toward the \$200 million goal. The Campaign promises to be the most successful campaign in the history of the University. This tremendous response is attributable to our alumni and friend leaders who have taken the initiative to assure the campaign's success and to those like you who have generously supported the Campaign.

We hope when the Campaign is completed in December of 2000 that all 70,000 alumni and 20,000 non-alumni friends will participate in the Campaign. About twenty-five percent have already participated. If you are in this number, we say a sincere thank you! If you are not, we thank you for making a Campaign commitment today so that you too can be counted.

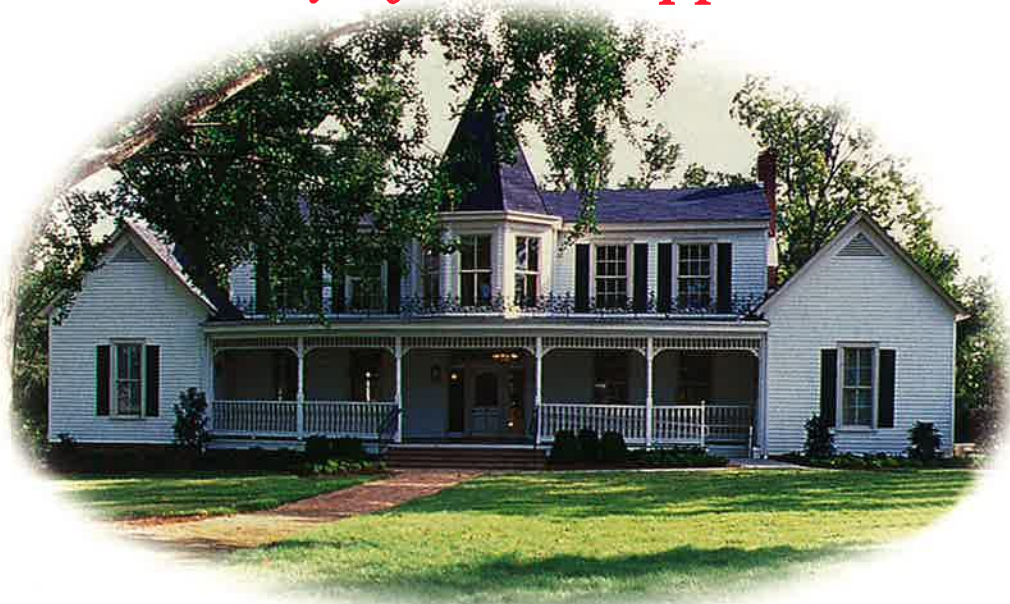
*Don L. Frugé*



## *Advancement Welcomes New Staff Member*

Ellen Rolfes, Director of the Ole Miss Associates Program, earned her Bachelor of Arts degree from the University of Memphis in 1968. She joins the Advancement staff after working in the non-profit sector in Memphis, Tennessee. Her current responsibilities include the planning and marketing of the Ole Miss Associates and Partners programs.

# *The University of Mississippi Foundation*



## *The University of Mississippi Foundation*

**P.O. Box 249, University, MS 38677**

**406 University Avenue, Oxford, MS 38655**

**<http://www.olemiss.edu/depts/foundation/>**

**E-mail: [umf@olemiss.edu](mailto:umf@olemiss.edu)**

**Telephone: (800)-340-9542; Facsimile: (601) 232-7880**

*The University complies with all applicable laws regarding affirmative action and equal opportunity in all its activities and programs and does not discriminate against anyone protected by law because of age, color, creed, disability, marital status, national origin, pregnancy, race, religion, sex, or status as disabled or Vietnam-era veteran.*

*Graphic design: Amy Howell. Contributing writers: Tina Hahn, Barbara Lago, Peter Lee, Elaine Pugh, Janis Quinn, and Deidra Walters.*

*Contributing photographers: Robert Jordan, Joe Ellis and Harry Briscoe. Editor: Sandra McGuire Guest.*



**The  
University of Mississippi Foundation**

**P. O. Box 249**

**University, MS 38677**